



# Certificate of Analysis

CDPHE QA SAMPLE

1 of 3

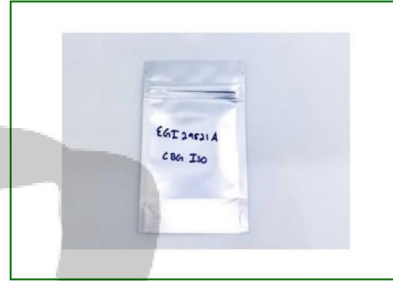
ICAL ID: CO 20220209-003  
Sample: CA221128-019-050  
CBG Isolate- EGI29521A  
Strain: CBG Isolate- EGI29521A  
Category: Concentrates & Extracts

Recalmo LLC  
Lic. #  
NA  
NA, CA 92121  
Lic. #

Batch#: EGI29521A  
Batch Size Collected:  
Total Batch Size:  
Collected: 11/29/2022; Received: 11/29/2022  
Completed: 11/29/2022

Moisture <b>NT</b> Water Activity <b>NT</b>	Total THC <b>ND</b>	Total CBD <b>3.65%</b>	Total Cannabinoids <b>99.89%</b>	Total Terpenes <b>NT</b>
--	------------------------	---------------------------	-------------------------------------	-----------------------------

Summary	SOP Used	Date Tested	
Batch			Pass
Cannabinoids	CO-POT-PREP-001 Other	02/10/2022	Pass
Residual Solvents	Iso CO-RS-PREP-001	02/10/2022	Pass
Mycotoxins	CO-PESTMICO-LC-PREP-	02/10/2022	Pass
Heavy Metals	001 CO-HM-PREP-001	02/10/2022	Pass
Pesticides	PESTMICO-LC-PREP-001/ PEST-GC-PREP-001	02/11/2022	Pass



Scan to see results

## Cannabinoid Profile

Analyte	LOQ (mg/g)	LOD (mg/g)	%	mg/g	Analyte	LOQ (mg/g)	LOD (mg/g)	%	mg/g
THCa	0.7360	0.1848	ND	ND	CBDV	0.7360	0.0843	ND	ND
Δ9-THC	0.7360	0.2048	ND	ND	CBN	0.7360	0.1560	ND	ND
Δ8-THC	0.7360	0.1012	ND	ND	CBGa	0.7930	0.2643	ND	ND
THCV	0.7360	0.0847	ND	ND	CBG	0.7841	0.2614	96.24	962.4
CBDa	0.7360	0.1901	ND	ND	CBC	0.9098	0.3033	ND	ND
CBD	0.7360	0.1630	3.65	36.5	<b>Total THC</b>			<b>ND</b>	<b>ND</b>
					<b>Total CBD</b>			<b>3.65</b>	<b>36.51</b>
					<b>Total</b>			<b>99.89</b>	<b>998.88</b>

Total THC = THCa \* 0.877 + Δ9-THC; Total CBD = CBDa \* 0.877 + CBD. NR = Not Reported, ND = Not Detected. Potency is reported on a dry weight basis. Instrumentation and analysis SOPs used: Cannabinoids: UHPLC-DAD (POT-INST-005), Moisture: Moisture Analyzer (MOISTURE-001). The measurement of uncertainty for total THC concentration is ± 0.009%.

## Terpene Profile

Analyte	LOQ (mg/g)	LOD (mg/g)	%	mg/g	Analyte	LOQ (mg/g)	LOD (mg/g)	%	mg/g
---------	------------	------------	---	------	---------	------------	------------	---	------

bd

NR = Not Reported (no analysis was performed); ND = Not Detected (the concentration is less than the Limit of Detection (LOD)). Analytical instrumentation used: HS-GC-MS; samples analyzed according to SOP CO-TERP-INST-003.



Infinite Chemical Analysis Labs  
8312 Miramar Mall  
San Diego, CA  
(858) 623-2740  
www.infiniteCAL.com  
Lic# C8-0000047-LIC

*Josh M Swider*

Josh Swider  
Lab Director, Managing Partner  
11/29/2022

Confident Cannabis  
All Rights Reserved  
support@confidentcannabis.com  
(866) 506-5866  
www.confidentcannabis.com



This product has been tested by Infinite Chemical Analysis Labs, LLC using validated testing methods and a quality control system as required by state law. Sample processing and testing was performed in accordance with CDPHE Colorado Wholesale Food, Industrial Hemp, and Shellfish Regulations (6 CCR 1010-21). Values reported relate only to the product tested. Infinite Chemical Analysis Labs, LLC makes no claims pertaining to the efficacy, safety, or other risks associated with any detected or non-detected levels of any compounds reported herein. This Certificate shall not be reproduced except in full without the written approval of Infinite Chemical Analysis Labs, LLC.



# Certificate of Analysis

CDPHE QA SAMPLE

2 of 3

ICAL ID: CO 20220209-003  
Sample: CA221128-019-050  
CBG Isolate- EGI29521A  
Strain: CBG Isolate- EGI29521A  
Category: Concentrates & Extracts

Recalmo LLC  
Lic. #  
NA  
NA, CA 92121  
Lic. #

Batch#: EGI29521A  
Batch Size Collected:  
Total Batch Size:  
Collected: 11/29/2022; Received: 11/29/2022  
Completed: 11/29/2022

## Residual Solvent Analysis

Category 1	LOQ	LOD	Limit	Status	Category 2	LOQ	LOD	Limit	Status	Category 2	LOQ	LOD	Limit	Status			
	$\mu\text{g/g}$	$\mu\text{g/g}$	$\mu\text{g/g}$			$\mu\text{g/g}$	$\mu\text{g/g}$	$\mu\text{g/g}$			$\mu\text{g/g}$	$\mu\text{g/g}$	$\mu\text{g/g}$				
1,2-Dichloro-Ethane	ND	0.509	0.167	1	Pass	Acetone	314.1	51.246	17.082	5000	Pass	n-Hexane	ND	0.281	0.066	290	Pass
Benzene	ND	0.0639	0.021	1	Pass	Acetonitrile	ND	0.359	0.12	410	Pass	Isopropanol	ND	3.84	1.28	5000	Pass
Chloroform	ND	0.108	0.036	1	Pass	Butane	ND	4.849	0.971	5000	Pass	Methanol	ND	8.917	2.972	3000	Pass
Ethylene Oxide	ND	0.579	0.153	1	Pass	Ethanol	ND	7.843	2.614	5000	Pass	Pentane	ND	4.271	0.962	5000	Pass
Methylene-Chloride	ND	0.729	0.127	1	Pass	Ethyl-Acetate	ND	2.288	0.313	5000	Pass	Propane	ND	13.302	4.434	5000	Pass
Trichloroethene	ND	0.145	0.018	1	Pass	Ethyl-Ether	ND	3.548	1.183	5000	Pass	Toluene	ND	0.864	0.088	890	Pass
						Heptane	38.5	2.859	0.687	5000	Pass	Xylenes	ND	0.857	0.101	2170	Pass

NR = Not Reported (no analysis was performed), ND = Not Detected (the concentration is less than the Limit of Detection (LOD)). Analytical instrumentation used: HS-GC-MS; samples analyzed according to SOP CO-RS-INST-003.

## Heavy Metal Screening

	LOQ	LOD	Limit	Status	
$\mu\text{g/g}$	$\mu\text{g/g}$	$\mu\text{g/g}$	$\mu\text{g/g}$		
Arsenic	ND	0.009	0.003	1.5	Pass
Cadmium	0.012	0.002	0.001	0.5	Pass
Lead	0.011	0.004	0.001	0.5	Pass
Mercury	ND	0.014	0.005	1.5	Pass

NR = Not Reported (no analysis was performed), ND = Not Detected (the concentration is less than the Limit of Detection (LOD)). Analytical instrumentation used: ICP-MS; samples analyzed according to SOP CO-HM-INST-003.

## Microbiological Screening

Limit	Result	Status
	bd	

ND = Not Detected. Analytical instrumentation used: qPCR and microbial plating; samples analyzed according to SOPs MIC-002 and MIC-004B at Infinite Chemical Analysis Labs, Michigan (4400 Ann Arbor Rd, Jackson, MI 49202).



Infinite Chemical Analysis Labs  
8312 Miramar Mall  
San Diego, CA  
(858) 623-2740  
www.infiniteCAL.com  
Lic# C8-0000047-LIC

*Josh M Swider*

Josh Swider  
Lab Director, Managing Partner  
11/29/2022

Confident Cannabis  
All Rights Reserved  
support@confidentcannabis.com  
(866) 506-5866  
www.confidentcannabis.com



This product has been tested by Infinite Chemical Analysis Labs, LLC using validated testing methods and a quality control system as required by state law. Sample processing and testing was performed in accordance with CDPHE Colorado Wholesale Food, Industrial Hemp, and Shellfish Regulations (6 CCR 1010-21). Values reported relate only to the product tested. Infinite Chemical Analysis Labs, LLC makes no claims pertaining to the efficacy, safety, or other risks associated with any detected or non-detected levels of any compounds reported herein. This Certificate shall not be reproduced except in full without the written approval of Infinite Chemical Analysis Labs, LLC.



# Certificate of Analysis

CDPHE QA SAMPLE

3 of 3

ICAL ID: CO 20220209-003  
Sample: CA221128-019-050  
CBG Isolate- EGI29521A  
Strain: CBG Isolate- EGI29521A  
Category: Concentrates & Extracts

Recalmo LLC  
Lic. #  
NA  
NA, CA 92121  
Lic. #

Batch#: EGI29521A  
Batch Size Collected:  
Total Batch Size:  
Collected: 11/29/2022; Received: 11/29/2022  
Completed: 11/29/2022

## Chemical Residue Screening

Analytes	LOQ	LOD	Limit	Status	Analytes	LOQ	LOD	Limit	Status		
	µg/g	µg/g	µg/g	µg/g		µg/g	µg/g	µg/g	µg/g		
Abamectin	ND	0.099	0.033	0.100	Pass	Hexythiazox	ND	0.030	0.001	0.100	Pass
Acephate	ND	0.030	0.007	0.100	Pass	Imazalil	ND	0.030	0.009	0.009	Pass
Acetaminophen	ND	0.046	0.015	0.100	Pass	Imidacloprid	ND	0.033	0.011	5.000	Pass
Acetamiprid	ND	0.030	0.005	0.100	Pass	Kresoxim Methyl	ND	0.030	0.007	0.100	Pass
Aldicarb	ND	0.030	0.008	0.008	Pass	Malathion	ND	0.030	0.003	0.500	Pass
Azoxystrobin	ND	0.030	0.005	0.100	Pass	Metalaxyl	ND	0.030	0.005	2.000	Pass
Bifenazate	ND	0.030	0.007	0.100	Pass	Methiocarb	ND	0.030	0.002	0.002	Pass
Bifenthrin	ND	0.030	0.004	3.000	Pass	Methomyl	ND	0.030	0.009	1.000	Pass
Boscalid	ND	0.030	0.008	0.100	Pass	Mevinphos	ND	0.030	0.008	0.008	Pass
Captan	ND	0.358	0.120	0.700	Pass	MGK-264	ND			Tested	
Carbaryl	ND	0.030	0.006	0.500	Pass	Myclobutanil	ND	0.030	0.007	0.100	Pass
Carbofuran	ND	0.030	0.005	0.005	Pass	Naled	ND	0.030	0.008	0.100	Pass
Chlorantranilprole	ND	0.030	0.009	10.000	Pass	Oxamyl	ND	0.030	0.007	0.500	Pass
Chlordane	ND	0.075	0.025	0.025	Pass	Paclobutrazol	ND	0.030	0.009	0.009	Pass
Chlorfenapyr	ND	0.075	0.025	0.025	Pass	Parathion Methyl	ND	0.024	0.008	0.008	Pass
Chlorpyrifos	ND	0.046	0.015	0.015	Pass	Pentachloronitrobenzene	ND	0.054	0.018	0.100	Pass
Clofentezine	ND	0.030	0.002	0.100	Pass	Permethrin	ND	0.030	0.002	0.500	Pass
Coumaphos	ND	0.030	0.004	0.004	Pass	Phosmet	ND	0.030	0.005	0.100	Pass
Cyfluthrin	ND	0.056	0.019	2.000	Pass	Piperonyl Butoxide	ND	0.030	0.003	3.000	Pass
Cypermethrin	ND	0.181	0.060	1.000	Pass	Prallethrin	ND	0.071	0.023	0.100	Pass
Daminozide	ND	0.053	0.018	0.018	Pass	Propiconazole	ND	0.030	0.009	0.100	Pass
Diazinon	ND	0.030	0.005	0.100	Pass	Propoxur	ND	0.030	0.008	0.008	Pass
Dichlorvos	ND	0.055	0.018	0.018	Pass	Pyrethrins	ND	0.030	0.003	0.500	Pass
Dimethoate	ND	0.030	0.006	0.006	Pass	Pyridaben	ND	0.030	0.002	0.100	Pass
Dimethomorph	ND	0.030	0.005	2.000	Pass	Spinetoram	ND	0.030	0.001	0.100	Pass
Ethoprophos	ND	0.030	0.006	0.006	Pass	Spinosad	ND	0.030	0.001	0.100	Pass
Etofenprox	ND	0.030	0.004	0.004	Pass	Spiromesifen	ND	0.030	0.009	0.100	Pass
Etoxazole	ND	0.030	0.004	0.100	Pass	Spirotetramat	ND	0.030	0.008	0.100	Pass
Fenhexamid	ND	0.034	0.011	0.100	Pass	Spiroxamine	ND	0.030	0.006	0.006	Pass
Fenoxycarb	ND	0.030	0.004	0.004	Pass	Tebuconazole	ND	0.030	0.006	0.100	Pass
Fenpyroximate	ND	0.030	0.004	0.100	Pass	Thiacloprid	ND	0.030	0.005	0.005	Pass
Fipronil	ND	0.050	0.017	0.017	Pass	Thiamethoxam	ND	0.030	0.008	5.000	Pass
Flonicamid	ND	0.035	0.012	0.100	Pass	Trifloxystrobin	ND	0.030	0.003	0.100	Pass
Fludioxonil	ND	0.036	0.012	0.100	Pass						

Mycotoxins	LOQ	LOD	Limit	Status	Mycotoxins	LOQ	LOD	Limit	Status	
	µg/kg	µg/kg	µg/kg	µg/kg		µg/kg	µg/kg	µg/kg	µg/kg	
B1	ND	5	2.96	Tested	G2	ND	5	2.07	Tested	
B2	ND	5	3.36	Tested	Ochratoxin A	ND	5	4.41	20	Pass
G1	ND	5	1.73	Tested	Total Aflatoxins	ND		20	Pass	

### Other Analyte(s):

NR = Not Reported (no analysis was performed), ND = Not Detected (the concentration is less than the Limit of Detection (LOD)). Analytical instrumentation used: LC-MS-MS & GC-MS-MS; samples analyzed according to SOPs CO-PESTMICO-LC-INST-004 and CO-PEST-GC-INST-004 and CO-PEST-GC-INST-003.



Infinite Chemical Analysis Labs  
8312 Miramar Mall  
San Diego, CA  
(858) 623-2740  
www.infiniteCAL.com  
Lic# C8-0000047-LIC

*Josh M Swider*

Josh Swider  
Lab Director, Managing Partner  
11/29/2022

Confident Cannabis  
All Rights Reserved  
support@confidentcannabis.com  
(866) 506-5866  
www.confidentcannabis.com



This product has been tested by Infinite Chemical Analysis Labs, LLC using validated testing methods and a quality control system as required by state law. Sample processing and testing was performed in accordance with CDPHE Colorado Wholesale Food, Industrial Hemp, and Shellfish Regulations (6 CCR 1010-21). Values reported relate only to the product tested. Infinite Chemical Analysis Labs, LLC makes no claims pertaining to the efficacy, safety, or other risks associated with any detected or non-detected levels of any compounds reported herein. This Certificate shall not be reproduced except in full without the written approval of Infinite Chemical Analysis Labs, LLC.